

Single Phase Full Controlled Bridges with freewheeling diode

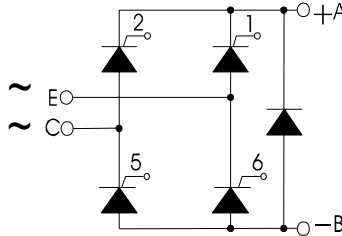
PSCT 85

$I_{dAV} = 82 \text{ A}$
 $V_{RRM} = 400-1600 \text{ V}$

Preliminary Data Sheet

V_{RSM} V_{DSM}	V_{RRM} V_{DRM}	Type
500	400	PSCT 85/04
900	800	PSCT 85/08
1300	1200	PSCT 85/12
1500	1400	PSCT 85/14
*1700	*1600	PSCT 85/16

* Delivery on request



Features

- Package with screw terminals
- Isolation voltage 3000 V~
- Planar glasspassivated chips
- Low forward voltage drop
- UL released, E 148688

Applications

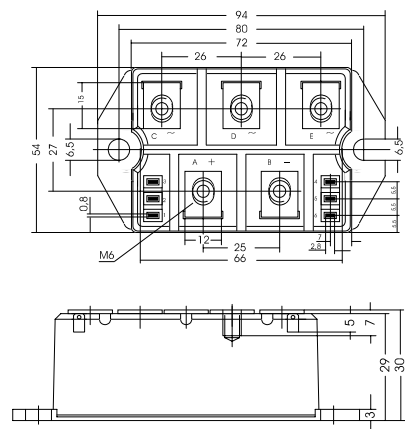
- Heat and temperature control for industrial furnaces and chemical processes
- Lighting control
- Motor control
- Power converter

Advantages

- Easy to mount with two screws
- Space and weight savings
- Improved temperature and power cycling capability
- High power density

Package, style and outline

Dimensions in mm (1mm = 0.0394")



Symbol	Test Conditions		Maximum Ratings	
I_{dAV}	$T_C = 85^\circ\text{C}$	per module	82	A
I_{TSM}	$T_{VJ} = 45^\circ\text{C}$ $V_R = 0$	$t = 10 \text{ ms}$ (50 Hz), sine	1150	A
		$t = 8.3 \text{ ms}$ (60 Hz), sine	1230	A
	$T_{VJ} = T_{VJM}$ $V_R = 0$	$t = 10 \text{ ms}$ (50 Hz), sine	1000	A
		$t = 8.3 \text{ ms}$ (60 Hz), sine	1070	A
$\int i^2 dt$	$T_{VJ} = 45^\circ\text{C}$ $V_R = 0$	$t = 10 \text{ ms}$ (50 Hz), sine	6600	$\text{A}^2 \text{ s}$
		$t = 8.3 \text{ ms}$ (60 Hz), sine	6280	$\text{A}^2 \text{ s}$
	$T_{VJ} = T_{VJM}$ $V_R = 0$	$t = 10 \text{ ms}$ (50 Hz), sine	5000	$\text{A}^2 \text{ s}$
		$t = 8.3 \text{ ms}$ (60 Hz), sine	4750	$\text{A}^2 \text{ s}$
$(di/dt)_{cr}$	$T_{VJ} = T_{VJM}$	repetitive, $I_T = 50 \text{ A}$	150	$\text{A}/\mu\text{s}$
	$f = 400\text{Hz}$, $t_p = 200\mu\text{s}$ $V_D = 2/3 V_{DRM}$			
	$I_G = 0.3 \text{ A}$ $di_G/dt = 0.3 \text{ A}/\mu\text{s}$	non repetitive, $I_T = 1/3 \cdot I_{dAV}$	500	$\text{A}/\mu\text{s}$
$(dv/dt)_{cr}$	$T_{VJ} = T_{VJM}$ $R_{GK} = \infty$, method 1 (linear voltage rise)	$V_{DR} = 2/3 V_{DRM}$	1000	$\text{V}/\mu\text{s}$
P_{GM}	$T_{VJ} = T_{VJM}$ $I_T = I_{TAVM}$	$t_p = 30\mu\text{s}$	≤ 10	W
		$t_p = 500\mu\text{s}$	≤ 5	W
P_{GAVM}			0.5	W
V_{RGM}			10	V
T_{VJ}			-40 ... + 125	$^\circ\text{C}$
T_{VJM}			125	$^\circ\text{C}$
T_{stg}			-40 ... + 125	$^\circ\text{C}$
V_{ISOL}	50/60 HZ, RMS $I_{ISOL} \leq 1 \text{ mA}$	$t = 1 \text{ min}$	2500	V ~
		$t = 1 \text{ s}$	3000	V ~
M_d	Mounting torque	(M6)	5	Nm
	Terminal connection torque	(M6)	5	Nm
Weight	typ.		270	g

Symbol	Test Conditions	Characteristic Value	
I_D, I_R	$T_{VJ} = T_{VJM}, V_R = V_{RRM}, V_D = V_{DRM}$	≤ 5 mA	
V_T	$I_T = 200A, T_{VJ} = 25^\circ C$	≤ 1.75 V	
V_{TO}	For power-loss calculations only ($T_{VJ} = T_{VJM}$)	0.85 V	
r_T		6 mΩ	
V_{GT}	$V_D = 6V$	$T_{VJ} = 25^\circ C$	≤ 1.5 V
		$T_{VJ} = -40^\circ C$	≤ 1.6 V
I_{GT}	$V_D = 6V$	$T_{VJ} = 25^\circ C$	≤ 100 mA
		$T_{VJ} = -40^\circ C$	≤ 200 mA
V_{GD}	$T_{VJ} = T_{VJM}, V_D = 2/3 V_{DRM}$	≤ 0.2 V	
I_{GD}	$T_{VJ} = T_{VJM}, V_D = 2/3 V_{DRM}$	≤ 5 mA	
I_L	$T_{VJ} = 25^\circ C, t_p = 30\mu s$	≤ 450 mA	
	$I_G = 0.3A, di_G/dt = 0.3A/\mu s$		
I_H	$T_{VJ} = 25^\circ C, V_D = 6V, R_{GK} = \infty$	≤ 200 mA	
t_{gd}	$T_{VJ} = 25^\circ C, V_D = 1/2 V_{DRM}$	≤ 2 μs	
	$I_G = 0.3A, di_G/dt = 0.3A/\mu s$		
t_q	$T_{VJ} = T_{VJM}, I_T = 20A, t_p = 200\mu s, V_R = 100V$	150 μs	
	$-di/dt = 10A/\mu s, dv/dt = 15V/\mu s, V_D = 2/3 V_{DRM}$		
R_{thJC}	per thyristor; sine 180°el	0.65 K/W	
	per module	0.13 K/W	
R_{thJK}	per thyristor; sine 180° el	0.8 K/W	
	per module	0.16 K/W	
d_s	Creeping distance on surface	10.0 mm	
d_A	Creeping distance in air	9.4 mm	
a	Max. allowable acceleration	50 m/s ²	

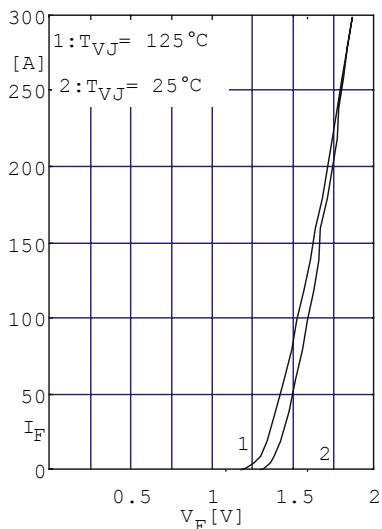


Fig. 1 Forward current vs. voltage drop per diode or thyristor

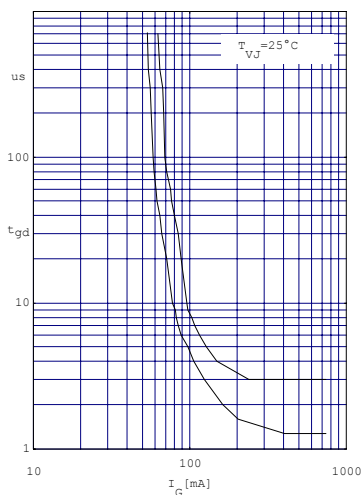


Fig. 2 Gate trigger delay time

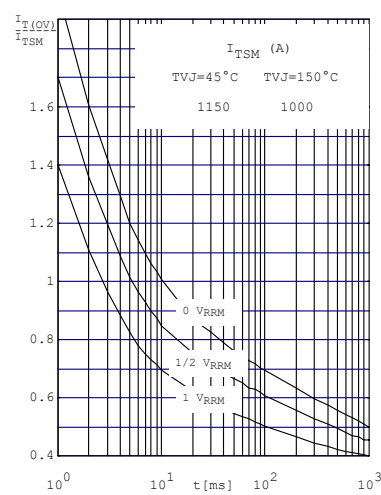


Fig. 3 Surge overload current per diode (or thyristor) I_{FSM} , I_{TSM} : Crest value t: duration



Fig.4 Gate trigger characteristic

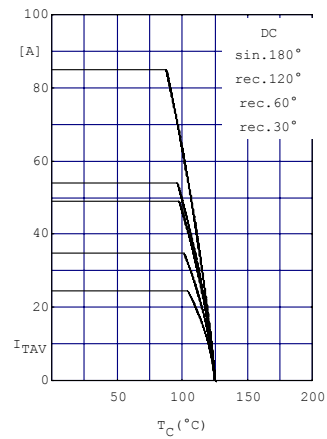


Fig.5 Maximum forward current at case temperature

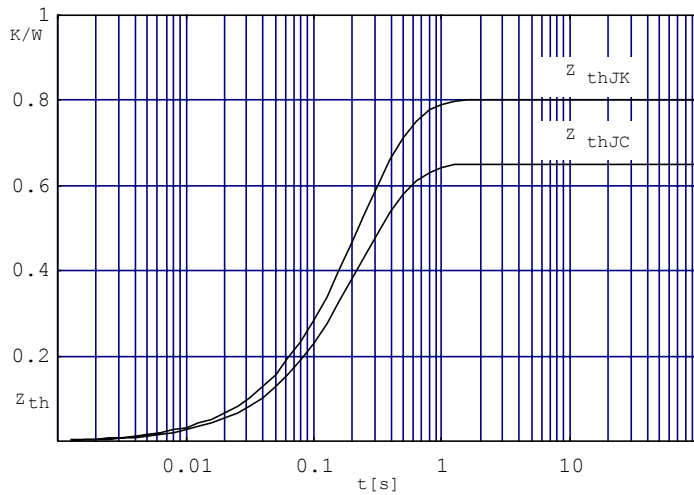


Fig.6 Transient thermal impedance per thyristor or diode (calculated)

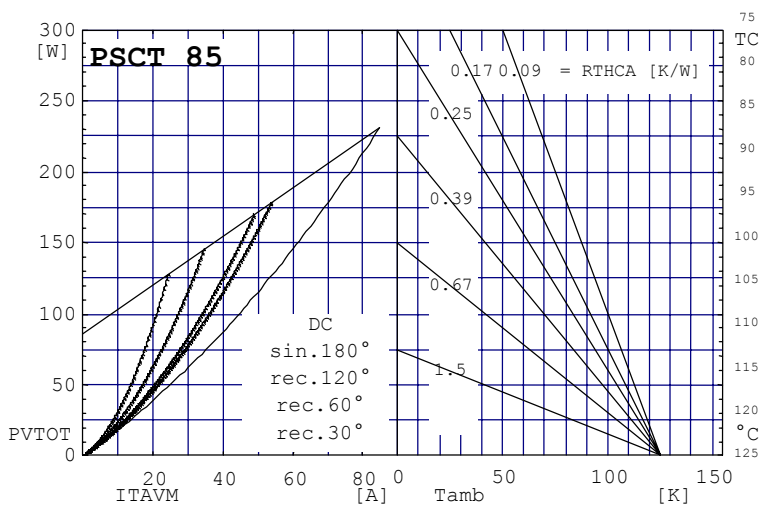


Fig. 7 Power dissipation vs. direct output current and ambient temperature